

SmartLatch and SmartBolt instructions for fire doors



ASSA ABLOY

JIGTECH™

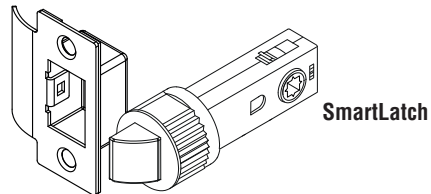
For
Fire Doors



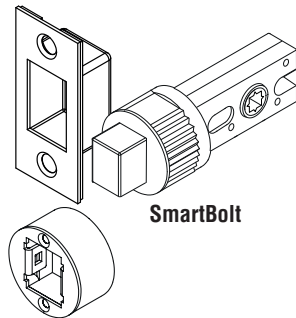
certifire
CF6123

0845 223 2124

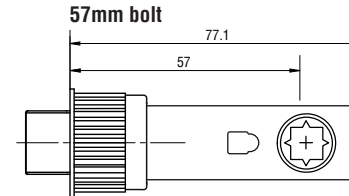
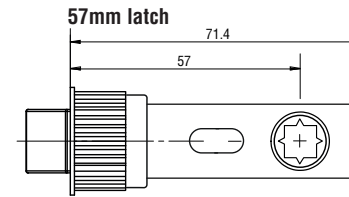
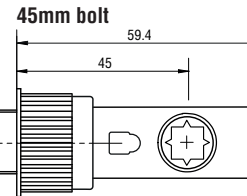
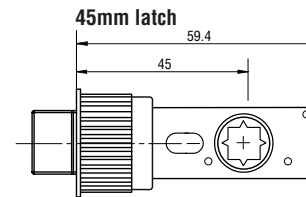
uniononline.co.uk



SmartLatch

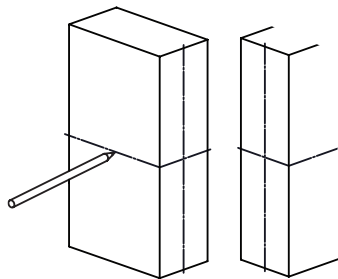


SmartBolt



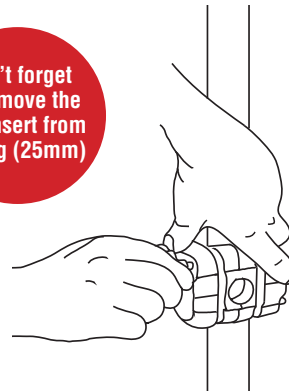
Note: not to scale

1

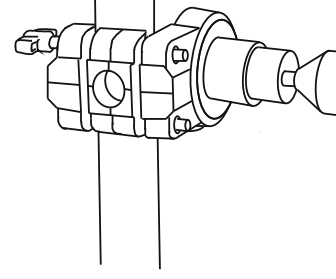


- Measure the desired height of the latch/bolt and draw a horizontal line on the door edge using a set square.
- Line the JIGTECH jig up with the horizontal line you made earlier and fasten the jig onto the door using the thumbturn. Ensure the jig is touch tight. **DO NOT** over tighten the jig.
- The latch/bolt should not be installed higher than 1100mm from the centre of the lock to the finished level of the surrounding floor.

Don't forget to remove the red insert from the jig (25mm)



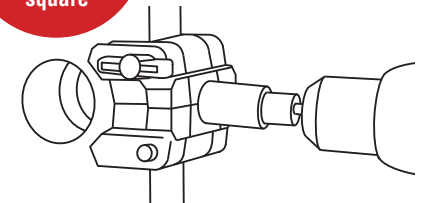
2



- Using the 44mm arbor and holesaw, drill through the face of the door from the guide side until the drill tip exits the timber on the opposing side. Switch sides and use the exit point as the guide to continue drilling (by applying low pressure) and remove the core. **DO NOT** place too much pressure on the drill.

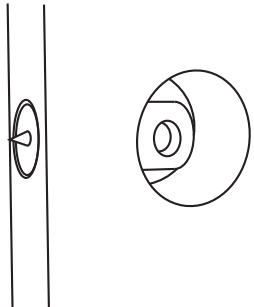
3

Ensure all holes are drilled straight and square



- Using the 25mm arbor and holesaw, drill the latch/bolt hole through the centre of the door edge and remove the core and any debris.
- Remove the jig and any sawdust from the door.

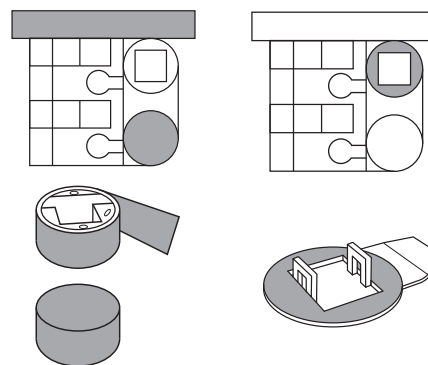
4



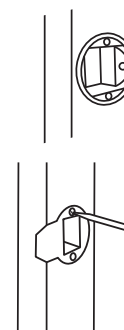
- Place the keep locator (JTA5103) inside the 25mm hole with the stainless steel tip facing the frame. Close the door shut and using a screwdriver, push the keep locator into the frame to create a centre mark.
- Using the mark made by the keep locator, position the 34mm spade bit (JTA5003-F) and drill a 17mm deep hole.

5

- Fit the intumescent kit onto the dust box and round strike plate.
Note: Installing the graphite intumescent kit correctly is essential to achieve the fire-rating.



6

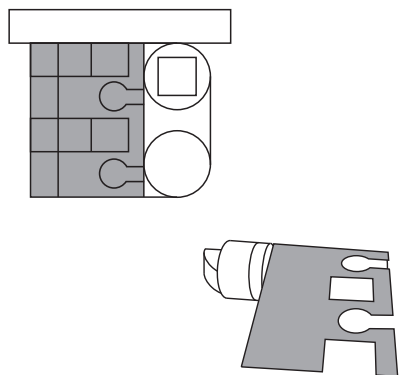


- Insert the metal dust box into the 34mm hole, ensuring the diagonal pre-drilled holes are horizontal. Using the fixing screws provided, secure the dust box to the frame.
- Position the strike plate over the vertical screw holes and mark where the lip needs to be cut out of the frame to ensure they are flush and remove the excess wood.
- Fit the strike plate using the remaining screws provided.

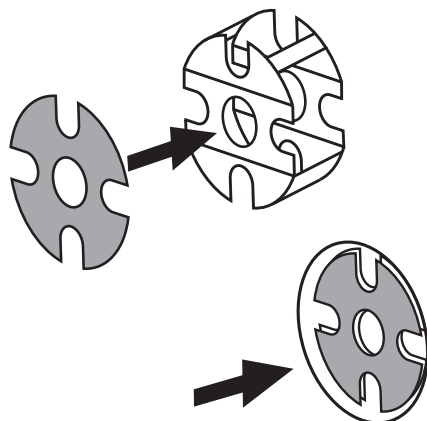
For fire doors, the round strike must be used

Continued overleaf

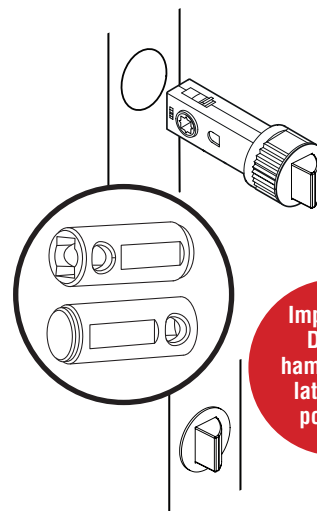
- 7**
- Fit the graphite intumescent kit onto the latch body.



- 8**
- Fit the intumescent onto **both sides** of the red Jigtech spacer



9



Important!
Do not
hammer the
latch into
position

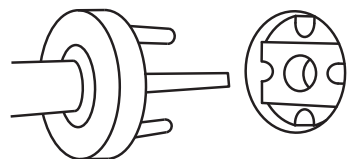
- Insert the JIGTECH plastic spacer that is supplied with the latch/bolt into the 44mm hole on the face of the door with the Jigtech logo at the top.
- Ensure the latch is facing the correct direction.**
- Insert the latch/bolt into the 25mm hole on the door edge, using a latch tapper (included in the Jigtech PRO kit (JTP6000) or bought separately (JTA5003) - place around the latch/bolt **and tap in until secure, taking care to avoid hitting the latch/bolt.**
- If the latch feels too tight, enlarge the hole by reinserting the 25mm holesaw and move in and out to remove a small amount of wood.

Alternatively, a light rub with sandpaper on the inside edge will allow the latch/bolt to sit more flush within the door.

- PLEASE NOTE: There is a risk of the door splitting if the hole drilled for the latch/bolt is too small.**

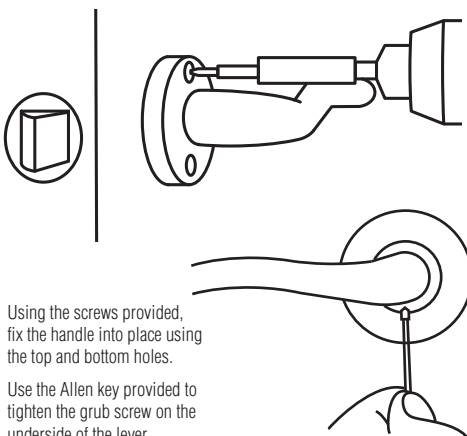
Handles fitting instruction - latch only

1



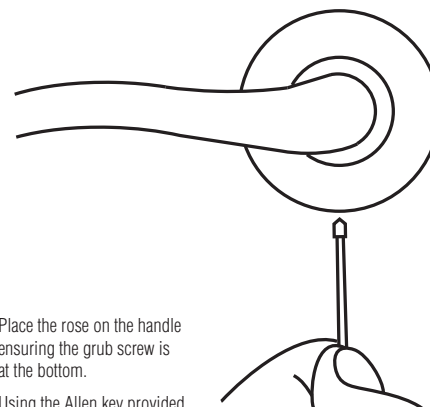
- Insert the handle with the spindle into the latch follower until the lever is flush with the door face.
- Ensure the other handle is secure within the door face. (This may require some light pressure and adjusting of the handles).

2



- Using the screws provided, fix the handle into place using the top and bottom holes.
- Use the Allen key provided to tighten the grub screw on the underside of the lever.

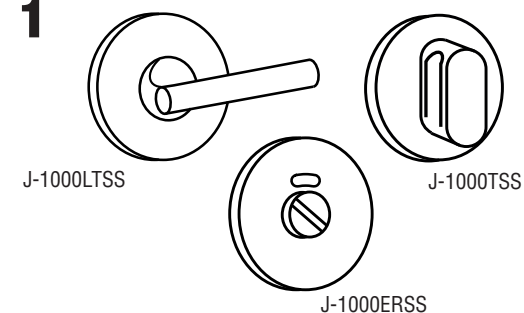
3



- Place the rose on the handle ensuring the grub screw is at the bottom.
- Using the Allen key provided, tighten the grub screw on the rose.

Bolt only

1



SmartBolt can only be used with:

- Internal
- J-1000LTSS (large turn bar)
 - J-1000TSS (standard thumbturn)
- External
- J-1000ERSS (emergency release)