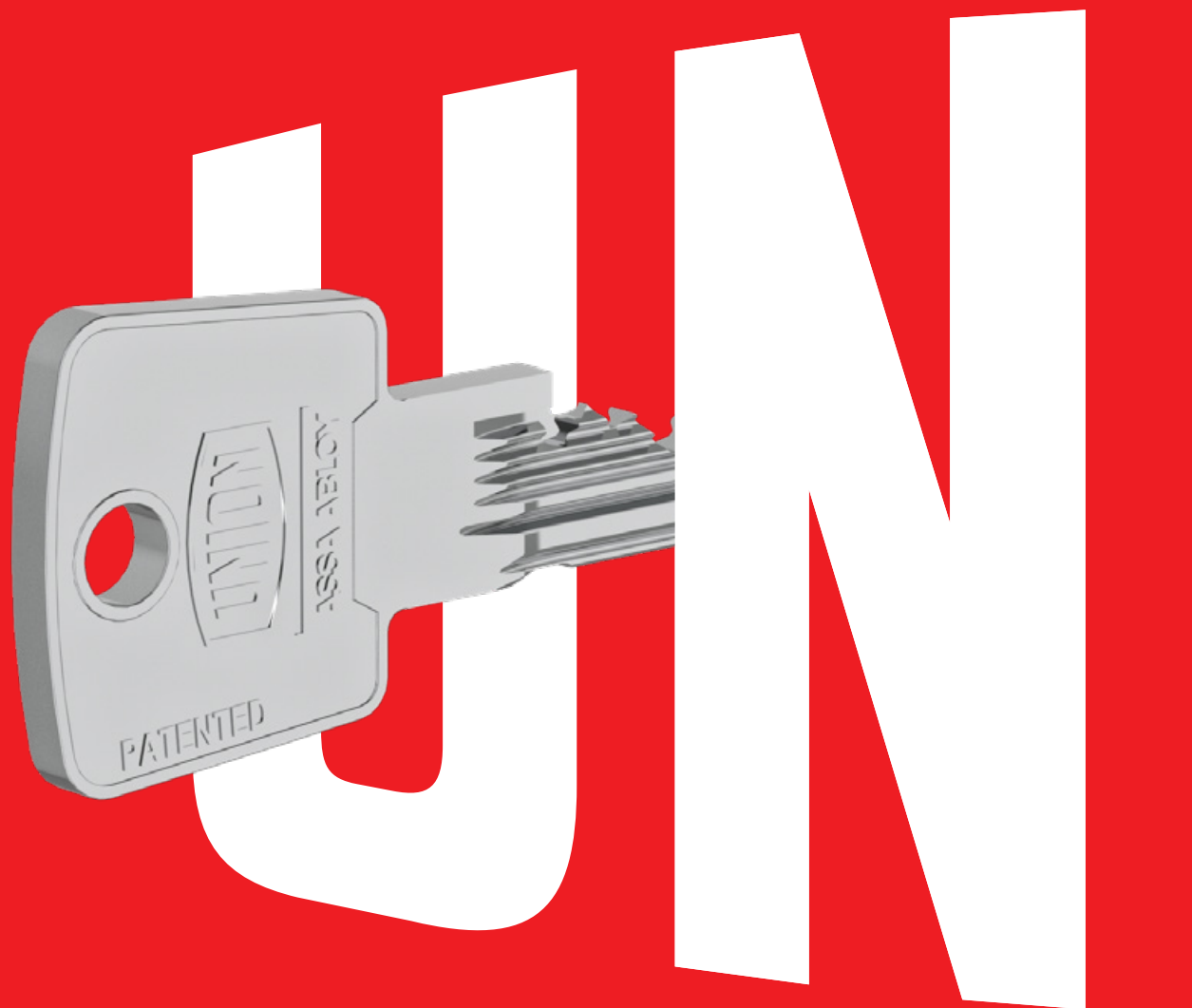


keyMASTER™ and keyPRIME™

Cylinder master key systems you can trust



Technical support

We're here to help with technical support.

+44 (0)1902 364189

master.key@assaabloy.com

uniononline.co.uk

UNION

Master key systems

For peace of mind

As a market leader in locks and door hardware we are proud of our heritage. With over 180 years of British engineering, experience and expertise we manufacture and supply products that give you performance you can trust.

Our brand has evolved and is renowned in more than 80 countries globally across many different applications.

From commercial to residential, education to healthcare, people and businesses rely on UNION for safety and security.

We offer master key cylinder solutions for a wide range of projects, all underpinned by our unrivalled dedicated UK master keying team.

Master key suites:

- Patented master key solutions
- Experienced UK master keying team
- Precision European engineering
- State-of-the-art manufacturing facility
- Solutions to suit a wide range of requirements
- Certified to EN 1303:2015 standard
- Tested in association with the United Kingdom Accreditation Service



The importance of key security and patent protection

A patent is a right given for an invention to prevent others from making, selling, using or importing a particular product or process for a period of up to 20 years.

For an invention to be patentable, it must be:

- 1 New
- 2 Useful
- 3 Non-obvious

Patents are wholly concerned with the functional aspect of a product or process. In the case of key copy protection, the function of a key is covered within patent law.

If there is no existing patent, then you are not protected.

keyMASTER™

Our flagship master key platform with a trusted serrated key technology along with a superior, robust build quality.

The range has secure patent protection until 2036 and is tested to the stringent requirements of EN 1303:2015.

The groove detector patent, with a moving detector pin and front profile technology enhances the security of the cylinder and makes it even harder for keys to be unlawfully replicated.

The 6 pin cylinder platform utilises trusted serrated key technology and a robust cylinder design which is perfect for large master key system requirements and for use in the toughest of environments.

The range can be specified to ensure all modern specification requirements are accommodated, and backed with the assurance of a high-quality British product design.

Available finishes

- Satin nickel
- Satin chrome
- Chrome
- Polished brass
- Satin brass
- Antique brass
- Matt black (coming soon)

Available thumb turns



Product performance

- Patented until 2036
- 550,000 keying combinations for medium/large master keying requirements
- 5 minutes drilling resistance
- 15kN pulling resistance
- Picking resistance
- Bumping resistance (KD only)
- 500,000 cycles performance in durability test
- 96 hours corrosion resistance

Fire rating



Classification table

Classification No.	1	6	0	B	0	C	6	D*
EN 1303:2015								

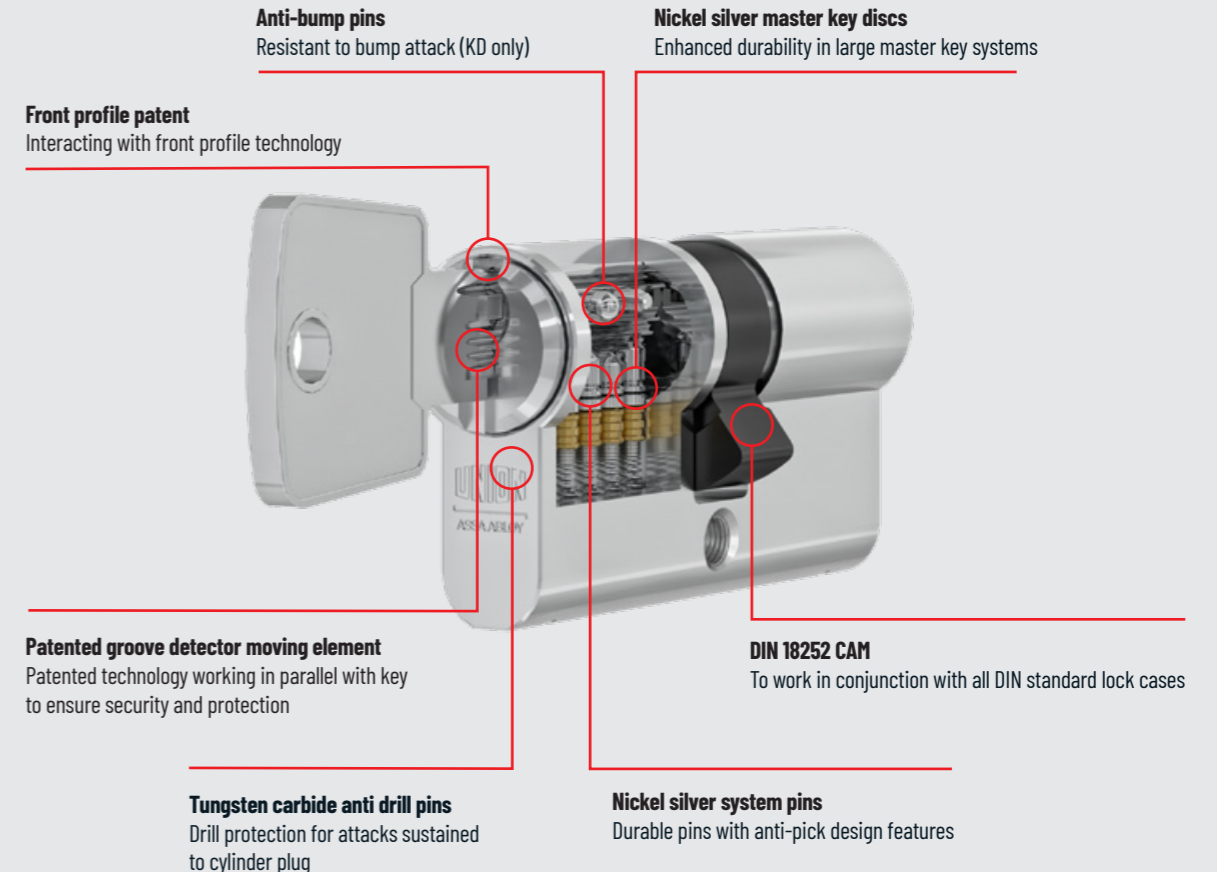
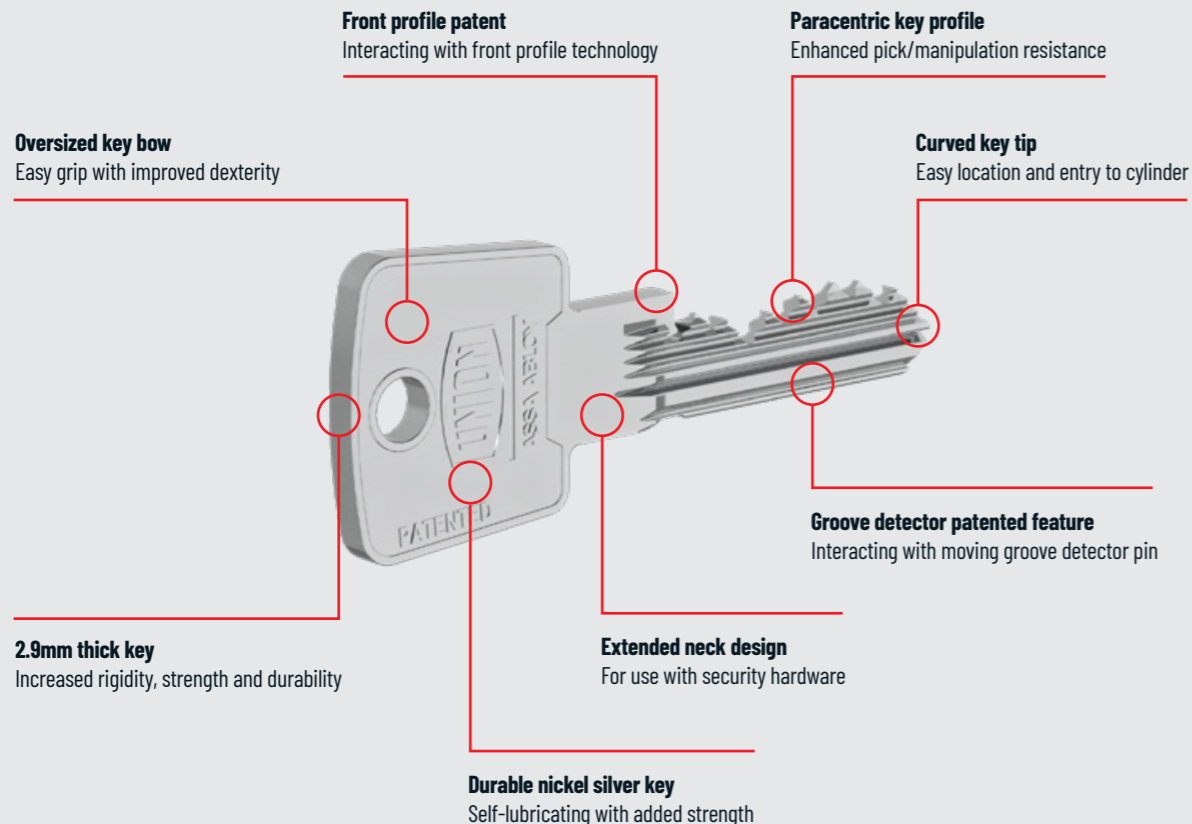
*When used in conjunction with high security escutcheon

Product code breakdown

Optional

J M 2 KMET 3040 SN 3 L

Packaging code	Keying type	Turn style	Product code	Length	Finish	Hand	Turn function
J = Boxed	M = Master keyed	- = Round	KMED = Euro double	Single available 30 - 80mm	UNION keyMASTER cylinders available in the following finishes:	L = Left R = Right	2 = Clutch release 3 = Classroom function (Leave out code if none of these functions are required)
All UNION cylinder products are supplied boxed	- = To differ	1 = Diamond	KMES = Euro single	See size table or UNION catalogue for more details	SN = Brushed satin nickel SC = Satin chrome PB = Polished lacquer brass CH = Chrome SB = Satin brass AB = Antique brass	(Only applicable with classroom function)	
		2 = Stadium (Default)	KMET = Euro key and turn	For key and turn cylinders, the first length denotes the turn side			
		3 = Large	KMOD = Oval double				
			KMOS = Oval single				
			KMOT = Oval key and turn				



keyPRIME™

A sleek, modern cylinder system designed with economy, safety and security in mind for all modern building requirements.

The cylinder platform boasts secure patented protection until 2036 and is tested to the stringent requirements of EN 1303:2015 for all security needs.

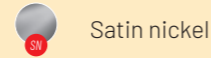
The solid 3mm reversible key is durable and rigid to withstand the toughest environments

Designed with symmetrical faces and no sharp edges, the system is simple and easy to use as the key will work no matter which way it's inserted.

The removal of sharp edges and corners from the key design makes the system a perfect solution for healthcare and education applications, as the key is prevented from being used to cause harm to users, patients or pupils.

The 6 pin cylinder platform utilises robust dimple key technology which is designed for high use environments; the system is available in a range of cylinder profiles and functions to suit new specification requirements.

Available finishes



Available thumb turns



Diamond turn

Product performance

- Patented until 2036
- 97,000 keying combinations for average/medium master keying requirements
- 5 minutes drilling resistance
- 15kN pulling resistance
- Picking resistance
- Bumping resistance (KD only)
- 500,000 cycles performance in durability test
- 240 hours corrosion resistance

Fire rating



Classification table

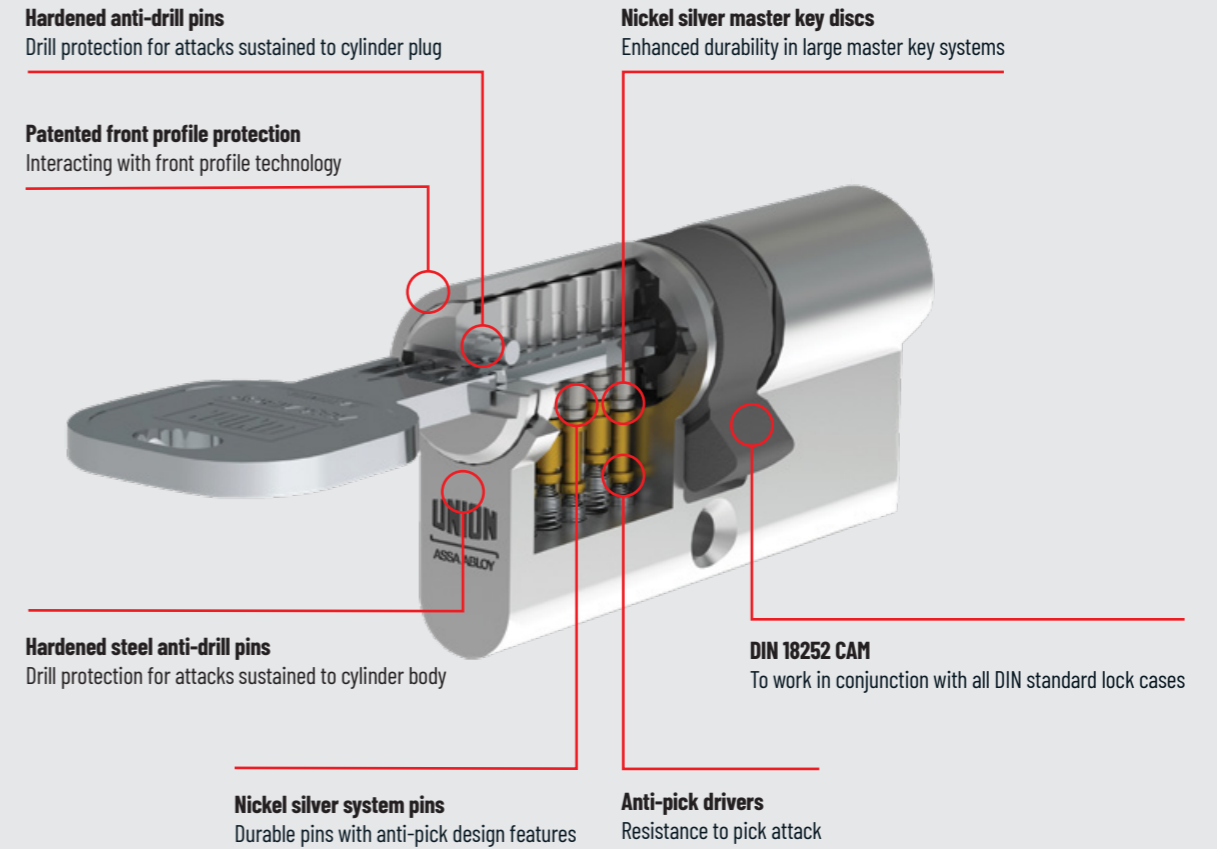
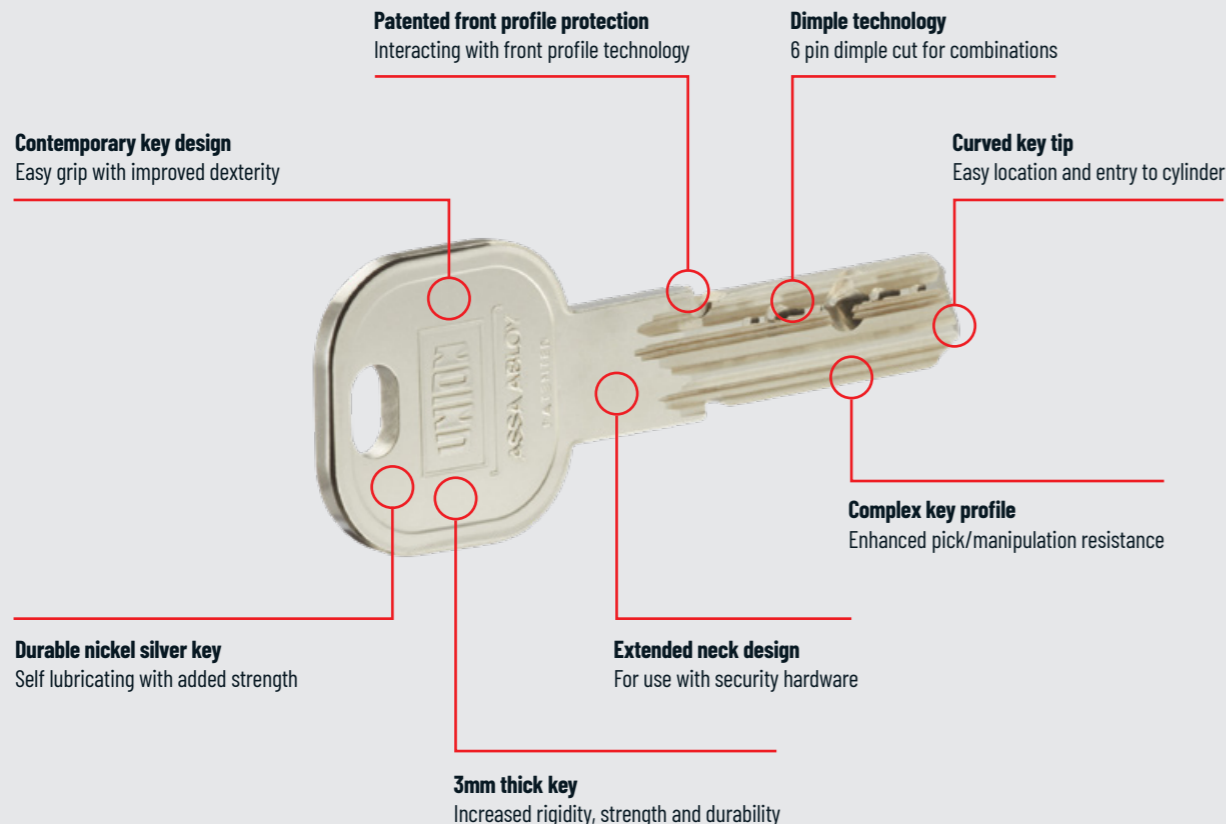
Classification No.	1	6	0	B	0	C	5	D*
EN 1303:2015								

*When used in conjunction with high security escutcheon

Product code breakdown

J M - KP ET 3040 SN

Packaging code	Keying code	Key platform	Cylinder type	Cylinder length	Finish
J = Boxed	M = Master keyed	KP = keyPRIME	EURO PROFILE: ES = Euro single	EURO PROFILE: Euro cylinders available up to 800mm length per side	SN = Satin nickel
All UNION cylinder products are supplied boxed	(Leave out code if product is keyed to differ)		ED = Euro double	Single cylinders stated as '3010' e.g. 40mm	
			ET = Euro turn	OTHER CYLINDER SHAPES RIM = Rim SCAN = Scandinavian	For key and turn cylinders, turn side is always identified as in the example above T30/K40
			CAM = Cam lock	OTHER CYLINDER SHAPES	Sizes not required to be stated
			PADLOCK		
			PAD = Padlock		



Product selector

Product range offering	keyPRIME™	keyMASTER™
Euro profile single cylinder	●	●
Euro profile double cylinder	●	●
Euro profile key and turn cylinder	●	●
Oval profile single cylinder		●
Oval profile double cylinder		●
Oval profile key and turn cylinder		●
Rim cylinder	●	●
Rim mortice cylinder		●
Scandinavian oval cylinder	●	●
For medium master key systems (up to 1,100 differs under a master key)	●	●
For complex master key systems (Up to 4,000 differs under a master key)		●

Product technical features	keyPRIME™	keyMASTER™
Number of system pins	6	6
Additional blocking feature e.g. sidebar		●
Number of usable differs	97,000	550,000
Patented key control	●	●
Patent protection	2036	2036
Anti-pick features	●	●
Anti-bump features	Optional	Optional
Drill protection in body and plug	●	●
Patented moving element		●
Guarantee	5 years	10 years

Keys	keyPRIME™	keyMASTER™
Key material	Nickel silver	Nickel silver
Replacements keys cut by manufacturer	●	●
Key blanks and local key cutting available	●	●

Additional features	keyPRIME™	keyMASTER™
Classroom / clutch functions available	●	●
Maximum cylinder size available (half euro)	90mm (80/10)	90mm (80/10)
Maximum cylinder size available (euro key/key & key/turn)	160mm (80/80)	160mm (80/80)
Offset cylinder sizes available	●	●
Rim cylinders available	●	●
Alternate profile cylinders (UK oval, mortice, Scandinavian, cam lock)	Scandinavian and cam lock	●
Padlock integration option	●	●

Turn range	keyPRIME™	keyMASTER™
Stadium turn		●
Round turn		●
Diamond turn	●	●
Large turn		●

Fire rating	keyPRIME™	keyMASTER™
Timber FD30	●	●
Timber FD60		●
Steel FD240		●

Finishes for keyPRIME™



Satin nickel

Finishes for keyMASTER™



Satin nickel



Satin chrome



Chrome



Polished brass



Satin brass



Antique brass



Matt black (coming soon)

Certification for keyPRIME™

Durability
Grade 6

Key related security
Grade 5

Physical security
Grade D

Certification for keyMASTER™

Durability
Grade 6

Key related security
Grade 6

Physical security
Grade D

For master key enquiries:

+44 (0)1902 364189

master.key@assaabloy.com

uniononline.co.uk



Shield high security

For ultimate security

- Certified to EN 12320:2012
- Interchangeable cylinder for use with all UNION master key systems
- Case hardened steel bodies and shackles
- Hardened anti-drill plate on padlock base and a corrosion resistant finish on padlock body



MADE IN BRITAIN



ASSA ABLOY

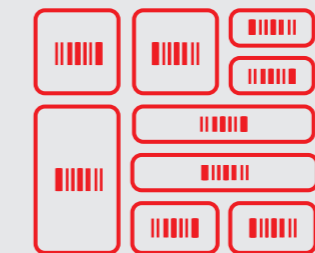
Why choose us?



We are constantly investing in our manufacturing facility to ensure we meet our customers service needs. With this investment our machinery is able to produce a key every 17 seconds!



We produce hundreds of thousands of UNION keys, cylinders and padlocks from our state-of-the-art Midlands based facility.



All products are split packed and barcoded for ultimate traceability and security giving peace of mind.



Our dedicated master key team is made up of 8 people who have over 200 years of experience and expertise combined.



ASSA ABLOY

ASSA ABLOY Opening Solutions UK and Ireland,
School Street, Willenhall, West Midlands WV13 3PW, UK

Tel: +44 (0)1902 364189
Email: master.key@assaabloy.com
Web: uniononline.co.uk

Every effort has been made to ensure the accuracy of product information at time of publication in October 2022. We are continually developing our products and reserve the right to change the specification of the products within this catalogue with or without prior notice. Subject to our Terms and Conditions of trading, a copy of our T's and C's is available upon request.

For further help or information, please visit uniononline.co.uk or call our customer service team.



Performance you can trust